

TAPE MARKER TYPE 21 (C532)

PARTS CATALOG

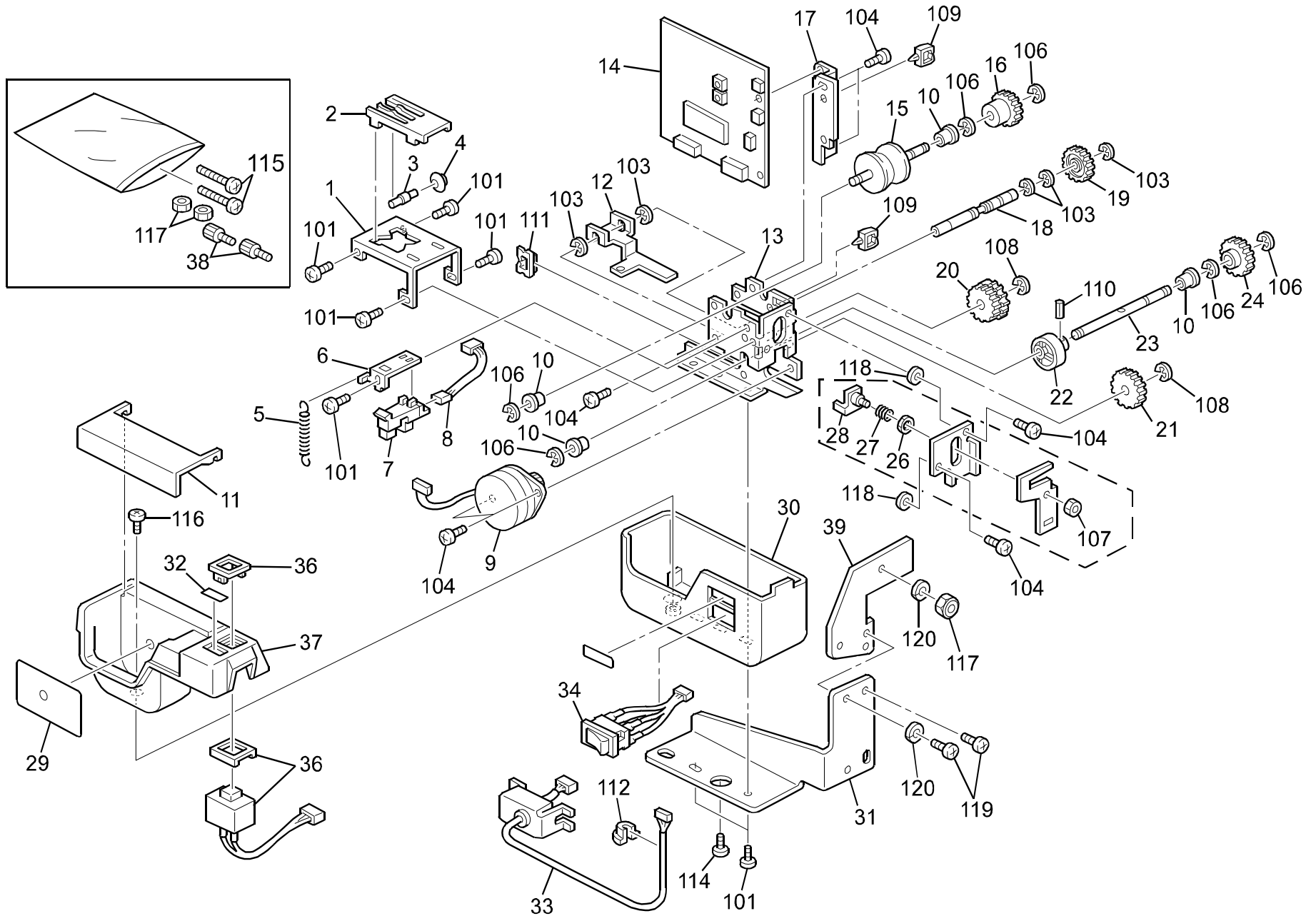
INTRODUCTION

This chapter instructs you the numbers and names of parts on this machine.

INDEX to PARTS CATALOG


1.Exterior (C532)	2
2.Decal (C532)	4
Parts Inde	7

1. EXTERIOR (C532)



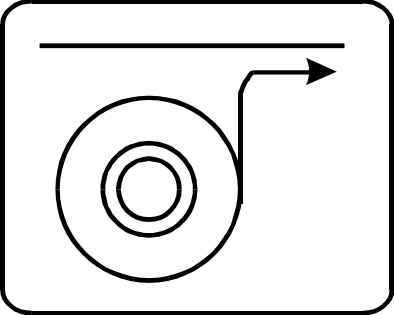
1.EXTERIOR (C532)

Index No.	Part No.	Description	Q'ty Per Assembly
1	C532 2221	Lower Tape Guide	1
2	C532 2222	Upper Tape Guide	1
3	C532 2224	Roller Shaft	1
4	C532 2223	Roller	1
5	C532 2238	Spring	1
6	C532 2229	Home Sensor Bracket	1
7	AW02 0021	Photointerruptor	1
8	C532 8110	Sensor Harness	1
9	C532 8125	Sepper Motor	1
10	5203 1852	Bushinig - 6mm	1
11	C532 2205	Tape Cover	1
12	C532 2228	Cutter Arm	1
13	C532 2206	Frame	1
14	C532 8001	Motor Drive Board	1
15	C532 2220	Feed Roller	1
16	C532 2215	Gear - 16Z	1
17	C532 2241	Motor Drive Board Bracket	1
18	C532 2210	Cutter Drive Shaft	1
19	C532 2212	2nd Gear - 23/48Z	1
20	C200 3604	Coupled Gear - 16T & 50T	1
21	5205 2612	Gear - 19Z	1
22	C532 2227	Cutter Cam	1
23	C532 2226	Cutter Cam Shaft	1
24	C532 2216	Gear - 26Z	1
25	C532 2230	Cutter A'ssy	1
26	5507 4452	Spacer - 5x8x0.5mm	1
27	C532 2237	Spring	1
28	C532 2233	Shealding Plate	1
29	C532 2563	Decal - Tape Set	1
30	C532 2404	Lower Cover	1
31	C532 2004	Tape Maker Bracket	1
32	C532 2562	Decal - Manual	1
33	C532 8230	Tape Maker Harness	1
34	C532 8115	Main Switch	1
36	C532 8120	Push Switch	1

Index No.	Part No.	Description	Q'ty Per Assembly
37	C532 2403	Upper Cover	1
38	C532 2009	Knob Screw - M4	2
39	C532 6501	Auxiliary Bracket	1
			
101	0801 1135	Philips Pan Head Screw - M3x3	
103	0720 0040Z	Retaining Ring - M4	
104	0313 0050Z	Philips Screw - 3x5	
106	0720 0050Z	Retaining Ring - M5	
107	0710 0030Z	Hex Nut 3	
108	0720 0030Z	Retaining Ring - M3	
109	1105 0360	Clamp	
110	0622 0100E	Spring Pin - 2x10mm	
111	1105 0322	Cord Bushing	
112	1106 0418	Cord Bushing	
114	0965 3005B	Tapping Screw W/T Flat Washer - M3x5	
115	0314 0250W	Philips Pan Head Screw - M4x25	
116	0354 0050Z	Tapping Screw - M4x5	
117	0710 0040W	Hexagon Nut - M4	
118	0708 0030B	Washer - M3	
119	0960 4008Z	Philips Flange Screw - M4x8	
120	0703 0040Z	Spring Washer - M4	

2. DECAL (C532)

1



2

MANUAL.SW.

2.DECAL (C532)

Index No.	Part No.	Description	Q'ty Per Assembly
1	C532 2563	Decal - Tape Set	
2	C532 2562	Decal - Manual	

Index No.	Part No.	Description	Q'ty Per Assembly

PARTS INDEX

Part No.	Description	Page and Index No.
AW02 0021	Photointerruptor	3- 7
C200 3604	Coupled Gear - 16T & 50T	3- 20
C532 2004	Tape Maker Bracket	3- 31
C532 2009	Knob Screw - M4	3- 38
C532 2203	X/X MB1	3- 37
C532 2204	X/X MB1	3- 30
C532 2205	Tape Cover	3- 11
C532 2206	Frame	3- 13
C532 2210	Cutter Drive Shaft	3- 18
C532 2212	2nd Gear - 23/48Z	3- 19
C532 2215	Gear - 16Z	3- 16
C532 2216	Gear - 26Z	3- 24
C532 2220	Feed Roller	3- 15
C532 2221	Lower Tape Guide	3- 1
C532 2222	Upper Tape Guide	3- 2
C532 2223	Roller	3- 4
C532 2224	Roller Shaft	3- 3
C532 2226	Cutter Cam Shaft	3- 23
C532 2227	Cutter Cam	3- 22
C532 2228	Cutter Arm	3- 12
C532 2229	Home Sensor Bracket	3- 6
C532 2230	Cutter A'ssy	3- 25
C532 2233	Shielding Plate	3- 28
C532 2237	Spring	3- 27
C532 2238	Spring	3- 5
C532 2241	Motor Drive Board Bracket	3- 17
C532 2403	Upper Cover	3- 37
C532 2404	Lower Cover	3- 30
C532 2562	Decal - Manual	3- 32
C532 2562	Decal - Manual	5- 2
C532 2563	Decal - Tape Set	3- 29
C532 2563	Decal - Tape Set	5- 1
C532 6501	Auxiliary Bracket	3- 39
C532 8001	Motor Drive Board	3- 14
C532 8110	Sensor Harness	3- 8

Part No.	Description	Page and Index No
C532 8115	Main Switch	3- 34
C532 8120	Push Switch	3- 36
C532 8125	Sepper Motor	3- 9
C532 8230	Tape Maker Harness	3- 33

Part No.	Description	Page and Index No.
5203 1852	Bushinig - 6mm	3- 10
5205 2612	Gear - 19Z	3- 21
5507 4452	Spacer - 5x8x0.5mm	3- 26

Part No.	Description	Page and Index No
0313 0050Z	Philips Screw - 3x5	3-104
0314 0250W	Philips Pan Head Screw - M4x25	3-115
0354 0050Z	Tapping Screw - M4x5	3-116
0622 0100E	Spring Pin - 2x10mm	3-110
0703 0040Z	Spring Washer - M4	3-120
0708 0030B	Washer - M3	3-118
0710 0030Z	Hex Nut 3	3-107
0710 0040W	Hexagon Nut - M4	3-117
0720 0030Z	Retaining Ring - M3	3-108
0720 0040Z	Retaining Ring - M4	3-103
0720 0050Z	Retaining Ring - M5	3-106
0801 1135	Philips Pan Head Screw - M3x3	3-101
0960 4008W	Philips Flange Screw - M4x8	3-119
0965 3005B	Tapping Screw W/T Flat Washer - M3x5	3-114
1105 0322	Cord Bushing	3-111
1105 0360	Clamp	3-109
1106 0418	Cord Bushing	3-112